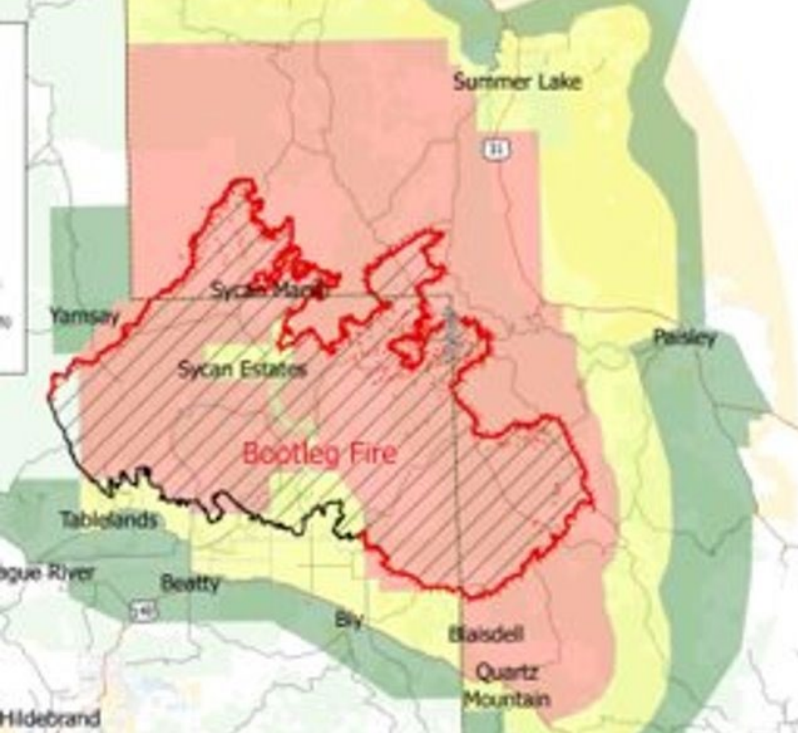


Office of Resilience and Emergency Management

Rhonda Nyseth
Social Service Emergency
Liaison

April 25, 2024



Bootleg Fire

- Bootleg Fire started near Beatty Oregon on July 6th, 2021. Before its full containment on August 15th, 2021 it burned 413,765 acres. At its worst it grew 1,000 acres per hour and it was the 2nd largest wildfire in the Nation. The fire destroyed 408 buildings, which included 161 houses, 247 outbuildings and 342 vehicles.
- Despite the size of the fire since the homes were mainly RV's or cabins the fire damage did not hit the dollar threshold for FEMA assistance. FEMA did not support the recovery efforts of homeowners in this disaster.
- OREM staff assisted 20+ homeowners with sheltering for the winter. OREM brought on a contractor to conduct disaster case management for 33 families in May of 2022. The contractor was granted 350,000 from the American Red Cross to address survivor needs and assist in rebuilding, this work was completed by June 30, 2023.



Golden Fire

- Golden Fire started on July 22, 2023 approximately at 2pm by a resident burning garbage.
- The fire quickly spread throughout the Klamath Estates, crowned and within minutes traveled over Hwy 140.
- Most residents had a five minute warning or less to evacuate and most report that a patrol deputy drove up to their driveway, yelled at them to get out because the fire was coming, as they continued onto warn the next resident.
- Most resident only left with the clothes on their back and a few precious animals and watch the flames take their homes.



Klamath Lake Long Term Recovery Group

- OREM reached out to the KL-LTRG within the first 2 hours of the Golden Fire and requested their assistance with donations.
- Within 36-48 Hours the KL-LTRG had a Donation drop off site up and ready
- The KL-LTRG had the donation Pick-up site ready to go before the Red Cross Shelter Closed for Golden Fire.
- Within 3 days of the fire the KL-LTRG had a QR code up and circulating on Facebook and around the community for donations.
- Oregon Community Funders ♦ \$15,000 committed on 7th day.



Golden Fire 2023 DONATIONS
 Drop off Location: On Time Pack and Ship
 1775 Washburn Way,
 Klamath Falls, OR 97603

Survivors Needs

- ***NON-PERISHABLE FOOD* EASY OPEN**
- Ash Sifting Screens
- Buckets
- Plastic Utensils and Plates
- Travel First Aid Kits
- Sealed Medications (Tylenol, Tums, Benadryl Etc) (Travel or Individual)
- Batteries
- Phone Chargers
- USB Power Banks
- Dish Soap (Pocket or Travel)
- Laundry Detergent (Pocket or Travel)
- Toilet Paper
- Deodorant
- Toiletries
- Paper Towels
- Socks
- Underwear
- Cleaning Supplies (chemicals)
- Cleaning Supplies (rags, SOS pads, Sponges)
- Feminine Hygiene Products
- Diapers (Children and Adult)
- Wet Wipes
- Trash Bags

Animal/Livestock Needs

- Pet Carriers
- Dog and Cat (All Pet) Food
- Hay (All Types)
- Cat Litter
- Feeding Containers/Bowls
- Leashes/Collars
- Temporary Fences
- Fencing Supplies (All Type)
- Halters

Please **DO NOT** bring any furniture at this time, right now we just need the essentials.



For any questions, please contact:
 Michelle Crane Ph: # 541-880-8426
 Klamath Lake Long-Term Recovery Group/COAD Program
 Coordinator with KLCAS



SURVIVORS ONLY


2023 Golden Fire DONATIONS Pick Up Center

Where: Living Springs Fellowship
 31897 Mission St.
 Bonanza, Oregon 97623

When: Sunday 9am-1pm
Monday-Friday
3:30pm-6:00pm

Animals Needs: Contact Relief Angels
 @ Valerie 541-663-6050

Red Cross Disaster Clean-Up Kits
 (Are available at donation center)



Coordinated Care Organization (CCO)- Cascade Health Alliance (CHA)

- Cascade Health Alliance started providing supports to Golden Fire survivors since the beginning. They have been serving 12 of their members. Those supports have been the following:
 - 5 hotel rooms at Motel 8 ranging from 60-90 days depending on the survivor's situation (cost still pending)
 - 4 Generators cost \$5,016.15
 - 5 Propane Tanks 30-40 lbs cost \$559.19 plus propane \$63.27
 - 2 Heaters cost \$373.11
 - 4 families with winter clothing \$1,100.82
 - 11 set of snow tires and 2 set of tire chains \$7,595.95
 - Total cost to date: \$13,738.39
 - Supported KL-LTRG with donation of \$15,000 for all survivors during initial response.



Klamath-Lake Long Term Recovery Groups support to survivors to date

- The KL-LTRG has been serving 17 households in case management and has held two events for all Survivors of the Golden Fire whether in case management or not: 34 households. The KL-LTRG has been assisting the Survivors since the initial disaster happened. The following support has been provided to the Golden Fire Survivors
- The two events were held for All Survivors (Resource Event & Holiday Hope event)
- 34 Trail Cameras \$5245.15, Batteries for cameras, \$1008.60
- Diamond Gift cards \$8700.00.
- 52 Gas Cards \$2700.00
- 5 Propane tanks & Cards \$740.00
- 7 Generators \$7623.26
- 12 Water totes 250 & 350 gallon \$4780.00
- Trailers for clients (shelter) \$30,891.00
- 2 Sets of Snow tires \$2240.00
- 10 households: Materials to prepare for winter (OSB, 2X4, insulation, shovels, tarps, heaters) \$10,067.46.
- 4 Batteries for Trailers and a battery charger (Power) \$1539.78
- 2 ID fees, 1 Septic renewal, and other fees paid for clients \$1163.90.
- 3 Household Items (Bedding, mattresses, car seat, etc.) \$1086.96
- 9 households gift cards or Amazon for Winter clothing/Gear for winter \$2912.73
- Excavator for Mountain Clean up with Team Rubicon \$4000.00
- Chain saw and supplies for client \$429.98.

Total \$81,562.83

Relief Angels

- Deployed 15 volunteers
- Cleaned up 21 homesites, 1 pending
- 6 personal vehicles
- 3 dump trailers
- 3 big rigs – 1 flat bed semi with self winching capabilities (tow truck), 1 flat bed semi and 1 semi with a self loader excavator with a 40ft yard container for hauling.
- 3 metal debris bins (2-20 yards and 1-40 yard)
- 1 excavator
- Coordinated dinners with local church for Team Rubicon volunteers
- Relief Angels invested \$8,200 in the clean up efforts.
- Metal reimbursement offset fuels costs at about \$5,000



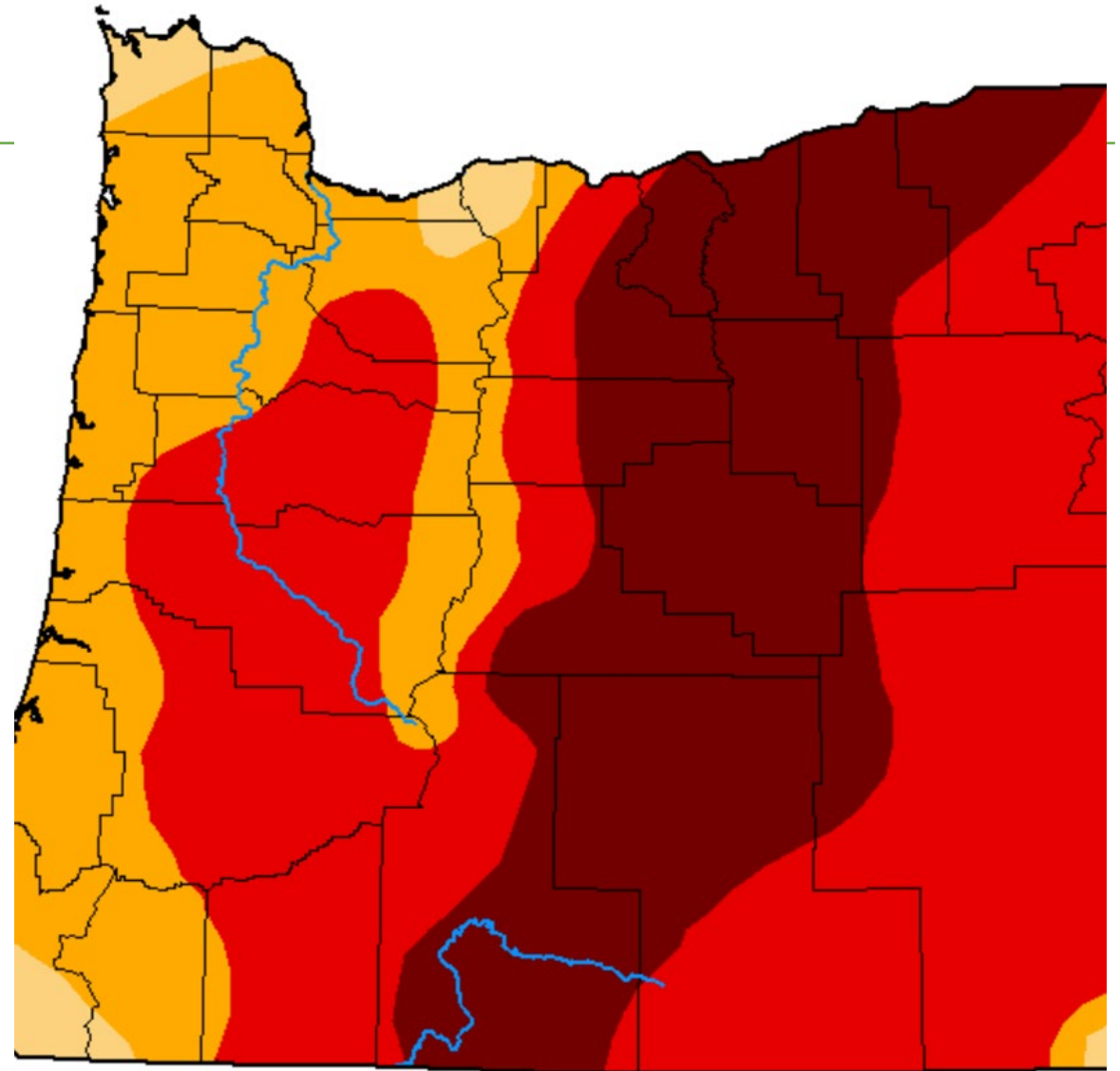
Accomplishments

- Operation Golden Opportunity ran from November 9th thru November 15th.
- Team Rubicon managed 44,314 cubic feet of debris.
- Team Rubicon and Relief Angels loaded and hauled 29 tons of logs to be turned into fire wood or milled lumber.
- Relief Angels hauled away 92 tons of metal debris.
- Waste Management hauled 36.16 tons of debris.
- 128.16 tons of debris removed total
- Cost to date for clean up **\$36,266**
- Total investments in supports to homeowners **\$95,301.22**



Klamath Water Mission

- In May of 2021 homeowners in the Klamath Basin started experiencing dry residential wells because of the ongoing drought.
- Due to drought, lake, river and stream flows were not at the levels needed to support endangered species needs as well as irrigation needs of local farmers.
- Local farmers began pumping of ground water to meet crop demands.



Water Delivery Industry Created



Data

As of April 10,2024	2024	2023	2022	2021	Totals
Number of Well Complaints	3	45	202	262	512
Households Requesting Tanks	1	7	60	114	181
Total Tanks Purchased by ODHS	0	0	100	260	360

Water Customers	2021	2022	2023	2024	Total
Current Households Receiving Water	23	20	12	2	57

Collaborative Efforts

- Klamath Well Workgroup consisted of:
 - Governor's Regional Solutions Coordinator
 - Oregon Water Resources Division
 - Oregon Department of Emergency Management
 - Oregon Department of Human Service, Office of Resilience and Emergency Management
 - Klamath County Commissioners
 - Klamath County Emergency Management
 - Klamath County Grants Manager
 - Klamath County Public Works
 - Klamath County Community College
 - Klamath County Homeowners
 - City of Klamath Public Works
- Accomplishments
 - Funding ask to the Oregon State Legislation eboard, 4 million was granted for dry wells and water refill station.
 - County established reimbursement program at 75% of well costs with a cap of \$40,000.
 - OWRD Well Abandonment, Repair or Replacement Funding (WARRF) 100% funding for low income eligible.
 - Partnership with Klamath Community College to start well drilling program and \$100,000 granted from the Oregon State Legislation to fund a well drilling rig.
 - Second funding request to Oregon State Legislature obtained additional 5 million to serve dry wells in Klamath County.

Klamath County Well Reimbursement Grant



Total Grants Completed: 162



Funding paid to Homeowners: \$2,425,434.55



Homeowner Expenditures: \$3,345,915.12



Applications are still open

Oregon Department of Human Services Cost



Just under
\$300,000 for water
tanks



Average monthly
cost of about
\$25,000



Just under 4
million for
biennium

Your Regional Emergency Coordinators

Northwest – Jeff Gilbert 503-756-0596

Benton	Lincoln	Polk
Clackamas	Linn	Tillamook
Clatsop	Marion	Washington
Columbia	Multnomah	Yamhill

East Side-Shelley Wight 971-599-0502

Baker	Harney	Klamath	Wallowa
Crook	Hood River	Lake	Wasco
Deschutes	Jefferson	Sherman	Wheeler
Gilliam	Malheur	Union	
Grant	Morrow	Umatilla	

South – Eli Groves 503-522-2359

Coos	Jackson
Curry	Josephine
Douglas	Lane

Small Business Resilience & Recovery

Presented by:

Kat Rutledge, Associate State Director



About the Oregon SBDC Network

The Oregon Small Business Development Center Network is funded in part through a Cooperative Agreement with the U.S. Small Business Administration, the Oregon Business Development Department, and Oregon's 17 community colleges, Eastern Oregon University, Southern Oregon University, and the Columbia Economic Team.

The Network's Lead Office is hosted at Lane Community College.



Small Business Development Centers



★ 20 Regional Centers ● 26 Satellite Offices 🌐 Global Trade Center

Programs and Services

Key Services

Confidential No Cost Advising
Low Cost Training

Programs

Capital Access

Global Trade

Market Research

Cybersecurity Awareness

Services in Spanish

CCB

Licensing

Business Resiliency Planning

Disaster Response Assistance

Business Transition

2022 Disaster Assistance For Rural Communities Act





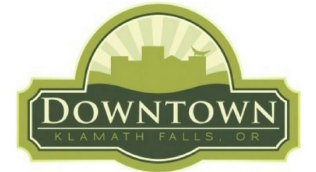
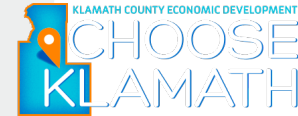
DISASTER RECOVERY GUIDE FOR BUSINESS

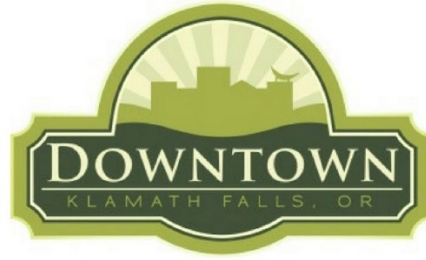
Developed By:



A Story of Resilience from Klamath County







Unintended Consequences of Disaster Response

**Jill Russel
President
Klamath Falls Downtown Association**

Questions?